



Wooden House made simple - The Holz100 Mobile Home



Thoma
Holz100 Canada



The Holz100 Mobile Home

...small is beautiful.

The philosopher Leopold Kohr was convinced that we must structure our lives according to the ideal of smallness in order to create a more humane world. Based on this principle, came the Holz100 Mobile Home.

In its development, our goal was to combine living health and sustainability in a floor plan reduced to the essentials. The clay architecture of the North American Pueblo Indians served as a model. An architecture that grows with its inhabitants and shrinks again. It adapts to the needs of the residents and leaves no traces. There are no residues or toxins in the body and soil, because everything is made of natural material.

The Mobile Home is made of Holz100 - moon-phase harvested wood without glue, without wood preservative, without paint. And it grows and moves with you.



The first Holz100-Mobile Home was situated on a farm in Carinthia.



Expandable

... in a modular System.

The Mobile Home was developed for people who want to break new ground. Add a module or change location. Develop your living space the way your life develops! Just as varied and versatile as life is, we do not stifle ourselves to find a solution but are always happy to discover something new. The listed floor plans are therefore for inspiration. The individual modules fit exactly on a truck. In the workshop of us or our partners, not only are the Holz100 walls mounted to fit before delivery, the integration of other trades are also taken care of.

In the meantime, everything is being prepared on the construction site so that everything can be done lightning fast on the big day of delivery. With the crane, the modules are lifted into place from the truck, there are a few smaller connections needed and after a day you are already to move in.

Build without onsite construction hassle!

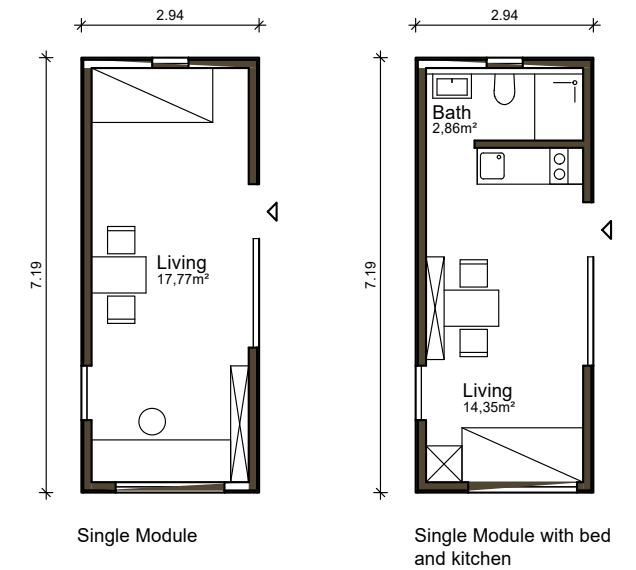


The Holz100 Mobile Home is constructed so that they can also be stacked.

A pure wooden building with 18 m² living space

Single Module from 39.000 €*

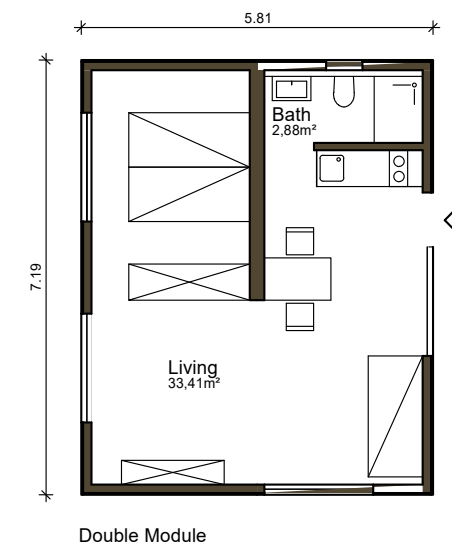
The pure single module is perfect for your needs in one room. It comes with wooden facade, windows, doors and roof. Inside, all the necessary cables for the electrical system are routed in the wall elements according to individual planning. Power is supplied via an external connection. Set up, hook up and you're done! Of course there's also the bathroom and kitchen for living.



Everything you need, in 35 m² living space

Double Module from 79.000 €*

One can also combine the individual modules. The kitchen module from LOHBERGER with sink, worktop and a stove with wood operation ensures crackling warmth in the winter. Included are infrared panels ELIAS for an automatic and comfortable temperature control.

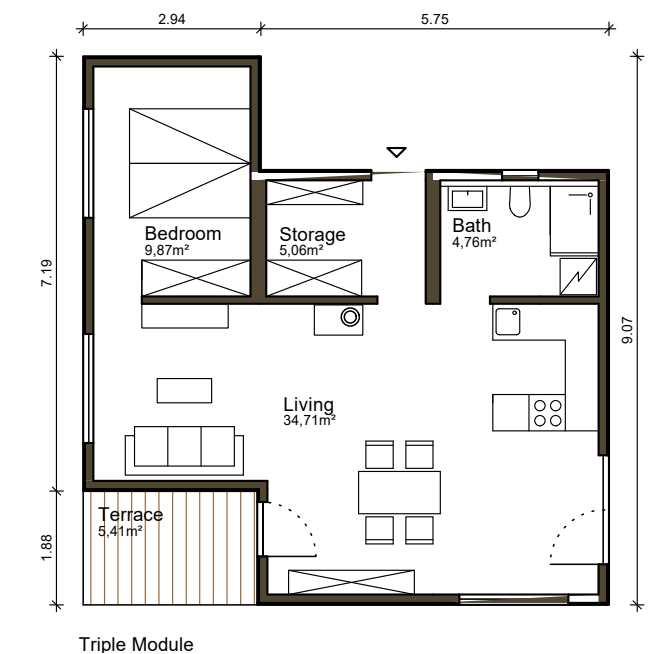


Luxury experience with 54 m² living space

Triple Module from 125.000 €*

With the triple module there is even more space and freedom for individual needs and can develop fully in to a small house. We and our partners are happy to assist you in the designing your personal dream home lifestyle, and then implement is for you. The imagination is limitless!

* All prices are net. The building costs, the cost of land development and the furnishings are not included. As of November 2016. Prices subject to change



Healthy Living



... down to the last detail.

It is quite natural for us, the "purity of the wood" can also be transferred to all other materials. The design is about the core, we reduce, where possible, but demand the highest quality. In personal contact with domestic companies we offer the possibility to the fully furnished Mobile Home everything from one source to get. This is how ELIAS from Austria supplies infrared panels with best heating performance and unique technology. The LOHBERGER company develops the kitchen module exclusively for the Mobile Home. It can even be upgraded to self-sufficient hot water treatment. The solid wood furniture of the company GEA are real design classics and made of beech wood. Play up the atmosphere of the bathroom with colored mastic asphalt. The material is non-slip and has a soft and warm surface.

1. Completion of the first Mobile Home in about half a day construction time
2. Durable and Modern - Rhombus shadow groove formwork from moon wood larch
3. Wood in every detail: solid wood windows and doors
4. Sofa and bed "Alphonso Sofano" from Gea
5. Shelves "Chaos" by Gea
6. Pleasant room heat: Infrared heating by Elias
7. Functional and appealing in the Design - kitchen module from Lohberger
8. The shower is finished with mastic asphalt
9. Wood has a warm surface and creates a pleasant indoor climate. Holz100 walls and "Black Bird" bed and tables with a bed from Gea